



PRINTED CIRCUIT BOARD LAYOUT SERVICES & CAPABILITIES

ACDi is an industry leader in printed circuit board (PCB) layout and design. Founded in 1984, ACDi has completed over 10,000 designs. Our team of designers and component librarians has over a century of combined experience in the field. A high mix of clients, in various market sectors, contributes to ACDi's expertise across a wide-range of board technologies.

HEADQUARTERS
7435 New Technology Way, Ste A
Frederick, MD 21703
301-620-0900
intouch@acdi.com

MANUFACTURING PLANT
100 Industry Ct.
Nashville, NC 27856
252-462-4700

MANUFACTURING PLANT
33 Business Park Dr, Unit #4
Branford, CT 06405
203-488-5795

Layout Platforms Supported:

- Mentor PADS
- Mentor PADS Professional
- Cadence Allegro
- Altium
- Mentor Xpedition

Schematic Platforms Supported:

- OrCAD
- Cadence Concept
- DxDesigner
- PADS Logic
- Altium

Additional Tools:

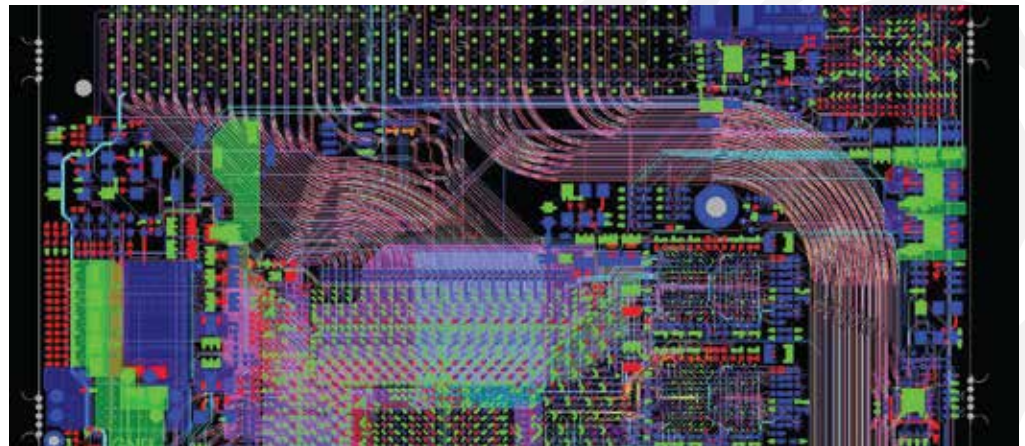
- Polar: Stackup Modeling
- Valor: DFA/DFM
- Blueprint-PCB: PWB/CCA Documentation
- Solidworks

- ✓ AS9100D
- ✓ ITAR Registered
- ✓ ANSI/ESD S20.20-2014 Certified
- ✓ J-STD-001 Certified
- ✓ FDA Registered
- ✓ NIST 800-171 Compliant
- ✓ Small Business
- ✓ SAM Registered

Core Competencies		Qualifications
<ul style="list-style-type: none"> ▪ 2-36 Layer Boards ▪ Organic and Ceramic Substrates ▪ 2-36 Layer Boards ▪ High-speed Digital, High-Frequency RF/Microwave ▪ IPC Class 2 and Class 3 Designs 	<ul style="list-style-type: none"> ▪ Up to 7 Lamination Cycles ▪ Up to 36 Layer Rigid-Flex Designs ▪ Backdrills, Blind/Buried Vias, Microvias ▪ Design for Cost/Assembly/Manufacturability 	<ul style="list-style-type: none"> ▪ 400+ Designs Per Year ▪ 10,000th PCB Design Milestone 2018 ▪ Team Has Over a Century of Design Expertise

What We Need to Kick Off Your Project	
<p>REQUIRED</p> <ul style="list-style-type: none"> ▪ Schematic (.pdf) ▪ Bill of Material (.xls) ▪ Netlist (.asc, .schdoc, [pstchip, pstnet, pstprt]) ▪ Layout Software Preference 	<p>OPTIONAL</p> <ul style="list-style-type: none"> ▪ Mechanical (.pdf or .dxf) ▪ SOW (critical nets, current draws, PCB/CCA part numbers, board markings, etc.)

Deliverables at Completion of Design	
<ul style="list-style-type: none"> ▪ Gerber Files (copper, silkscreen, soldermask, solder paste) ▪ Drill Files ▪ IPC-356 Netlist ▪ ODB++ or .asc 	<ul style="list-style-type: none"> ▪ PWB Drawing ▪ CCA Drawing ▪ Additional Files/Drawings Available by Request



PCB LAYOUT PROCESS FLOW CHART

